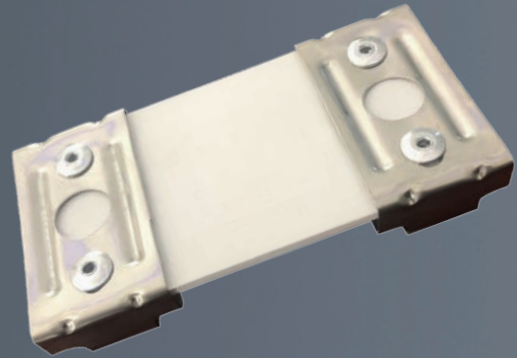


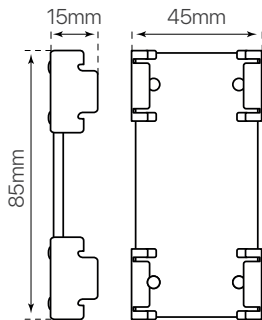
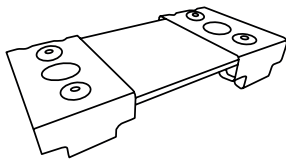
# soporte intermedia MARKET

## ficha técnica

### datasheet



ref. 5551180



|   |                                     |
|---|-------------------------------------|
| Nombre / Name                                     | soporte intermedia LUMINARIA MARKET |
| Referencia / Reference                            | 5551180                             |
| Materiales / Materials                            | PC + aluminio / PC + aluminum       |
| Difusor / Diffuser                                | -                                   |
| Potencia / Power                                  | -                                   |
| Temperatura de color / Color temperature          | -                                   |
| Flujo luminoso / Luminous flux                    | -                                   |
| Dimable / Dimmable                                | -                                   |
| Ángulo de apertura / Beam angle                   | -                                   |
| Ángulo de inclinación / Inclination angle         | -                                   |
| IP  | -                                   |
| IK  | -                                   |
| F.P   | -                                   |
| UGR   | -                                   |
| IRC   | -                                   |
| Chip  | -                                   |
| Driver  | -                                   |
| Vida media ( duración ) / Average life            | -                                   |
| Clase energética / Energy class                   | -                                   |
| Aislamiento eléctrico / Electrical isolation      | -                                   |
| Colores / Colors                                  | -                                   |
| Medida exterior / Product size                    | 85mm x 45mm x 15mm                  |
| Medidas de corte / Cutting measurements           | -                                   |
| Tª ( ambiente/trabajo ) / Tª ( environment/work ) | -                                   |
| Input   | -                                   |
| Output  | -                                   |
| Frecuencia / Frequency                            | -                                   |
| Peso / Weight                                     | 14g                                 |
| Certificados / Certificates                       | -                                   |
| Garantía / Warranty                               | -                                   |